



Main Control Valve Body (44.40.01)

Special Service Tools



ZF Automatic transmission valve block seals remover
307-492 (LRT-44-005)

Removal

NOTE :

The transmission control module (TCM) is part of the main control valve body and cannot be serviced separately.

1 .



WARNING: Do not work on or under a vehicle supported only by a jack. Always support the vehicle on safety stands.

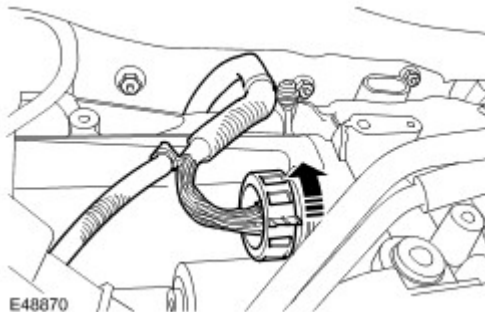
Raise and support the vehicle.

2 .

Remove the fluid pan. For additional information, refer to [Fluid Pan, Gasket and Filter \(44.24.04\)](#) (Section 307-01)

3 .

Disconnect the electrical connector.

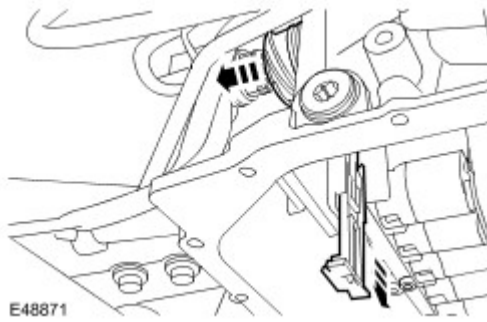


4 .

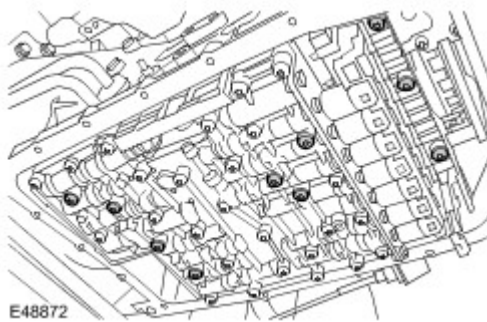
Remove and discard the electrical connector sleeve.



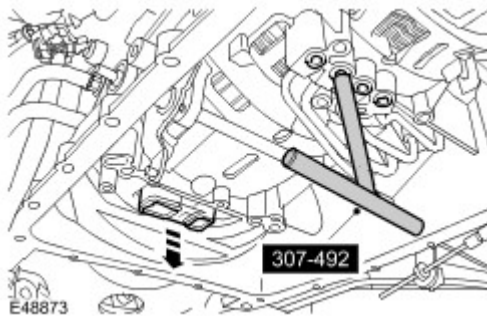
Release the retainer.





5. Remove the valve body.
 - ▶ Position a container to collect spillage.
 - ▶ Remove the 10 Torx screws.



6. Using the special tool, remove the 4 seals.
7. Remove the seal block.



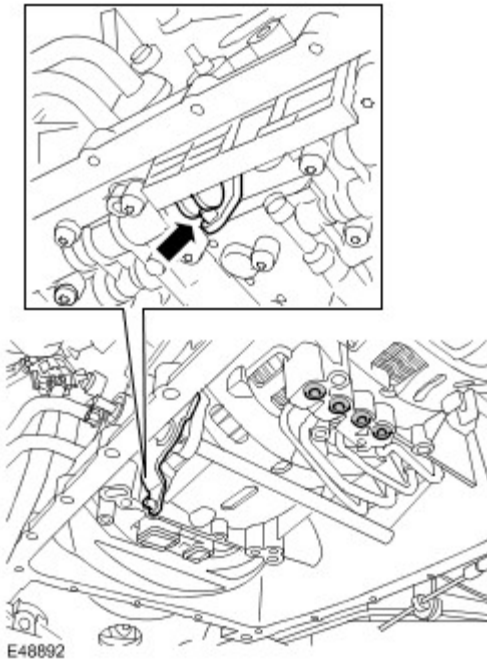
Installation

1.  **CAUTION:** Make sure that when fully fitted, all seals protrude by the same amount.
-  **CAUTION:** Engage the selector lever with the groove in the piston rod.

Install the valve body.

- ▶ Clean the component mating faces.

- ▶ Install new seals.
- ▶ Install a new seal block.
- ▶ Tighten the Torx screws to 8 Nm (6 lb.ft).



- 2 . Install a new electrical connector sleeve.
 - ▶ Secure with retainer.
- 3 . Connect the electrical connector.
- 4 . Install the fluid pan. For additional information, refer to [Fluid Pan, Gasket and Filter \(44.24.04\)](#) (Section 307-01)
- 5 . Calibrate a new main control valve body using T4.